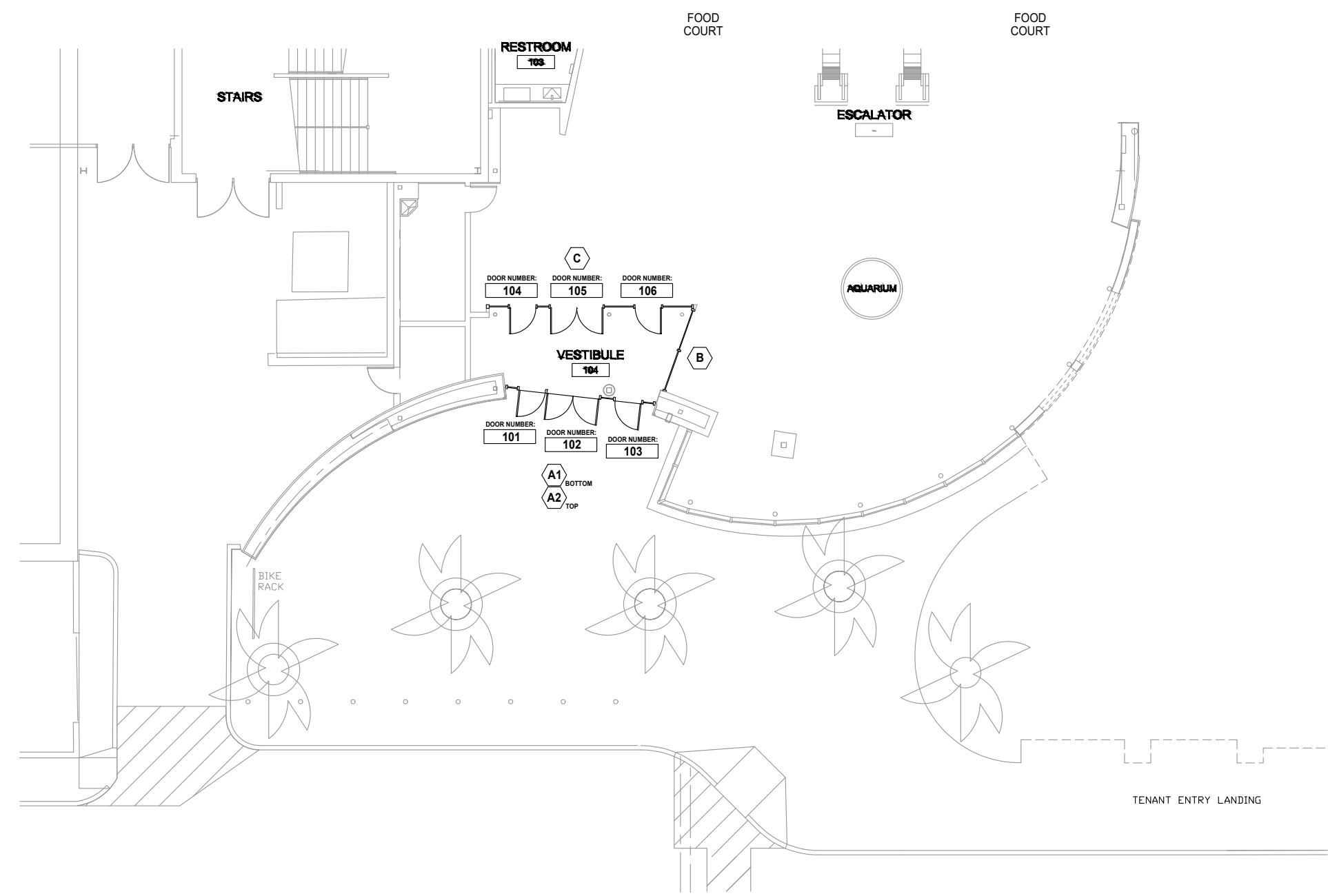
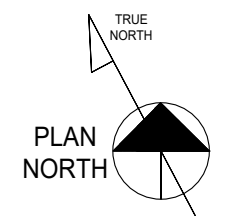


**LA PALMERA MALL
KEY MAP**



SITE PLAN VIEW

QUANTITY: 04
 SCALE: NTS
 ARCH REF: 1/A-101
 1/A-401
 5/A-401

01

GROUND LEVEL

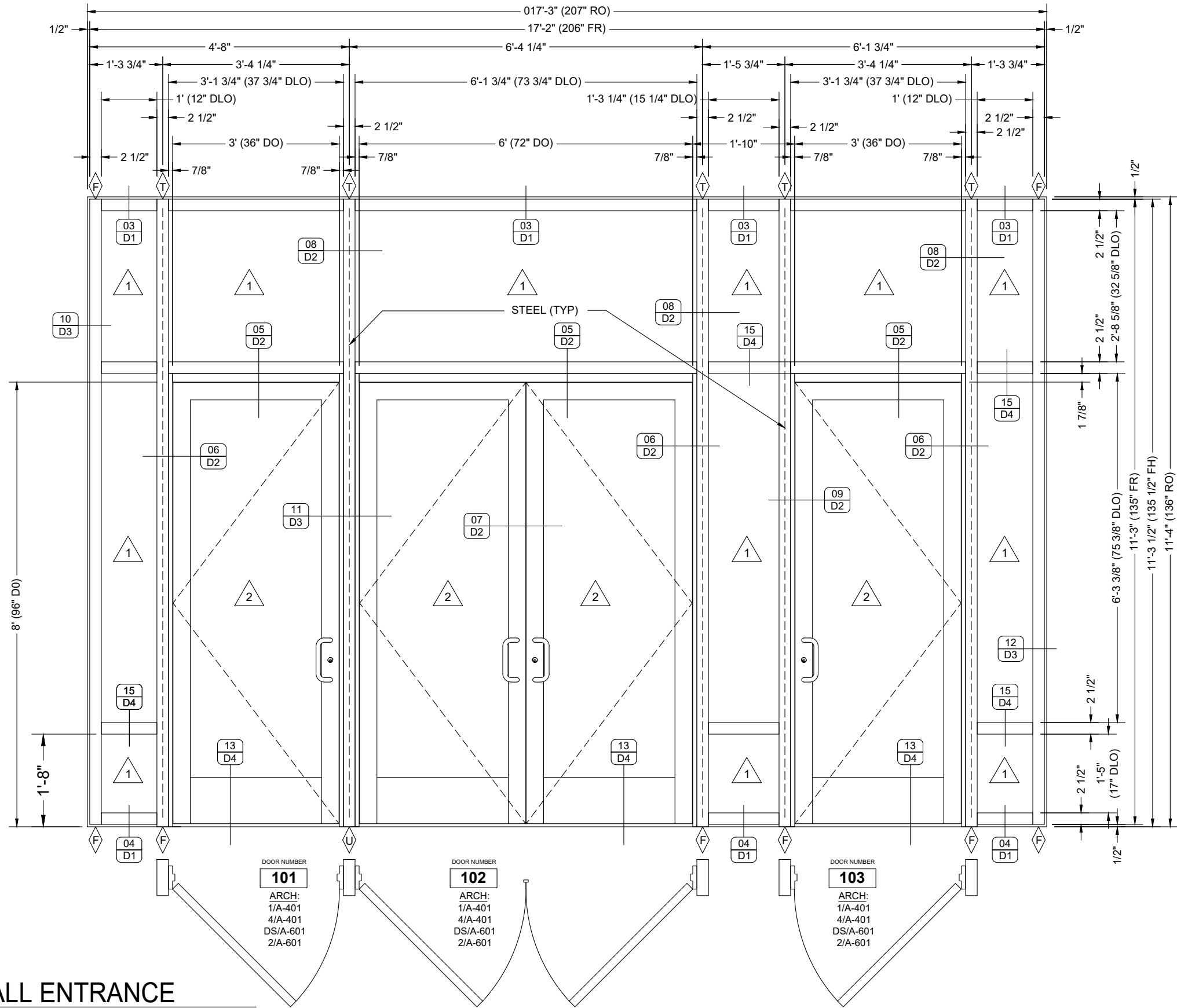
KAWNEER 1600, SYSTEM 1, IMPACT CURTAIN WALL
 KAWNEER IR350 IMPACT ENTRANCE ON CURTAIN WALL FRAME
 KAWNEER TRIFAB VG-450 ALUMINUM STOREFRONT
 KAWNEER 350 STANDARD DOOR ON TRIFAB VG-450 FRAME

NO.	DATE	BY	DESCRIPTION
1	02/19/22	fp	First Submittal

CONTRACTOR'S GLASS PRODUCTS
 7701 WEBER RD., CORPUS CHRISTI, TX 78315
 WORK (361) 854-8188 FAX (361) 854-4412

PROJECT: LA PALMERA MALL
REMODEL OF FOOD COURT ENTRANCE
 ARCHITECT: OMNIPLAN
 214-326-1080
 GENERAL CONTRACTOR: VCC, LLC
 469-504-3110

PROJECT NO.	CGP-2202-01
DRAWN BY	fp
DATE	02/19/22
SCALE	NTS
DRAWING	FLOOR PLANS
SHEET	P1



- EXTERIOR DOOR HARDWARE**
- CONTINUOUS GEARED HINGES
 - KA WNEER 7686 CONCEALED ROD
 - EXIT DEVICES
 - EXTERIOR CYLINDERS
 - ADA THRESHOLDS
 - C-09 PULLS
 - SEALS/SWEEPS
 - OVERHEAD SURFACE MOUNTED ADJUSTABLE CLOSERS
 - STANLEY MAGIC FORCE AUTOMATIC DOOR OPERATOR DR.#703

ELEVATION

QUANTITY: 01
 SCALE: 1/2" = 1'-0"
 ARCH REF: 1/A-101
 2/A-301

A1

CURTAIN WALL ENTRANCE

KAWNEER 1600 SYSTEM 1 IMPACT CURTAIN WALL
 KAWNEER IR 350 IMPACT ENTRANCE ON CURTAIN WALL

2/A-301 2/A-311 5/A-301 1/A-401 4/A-401 5/A-401 DS/A601 2/A-601

DOOR NUMBER
101
 ARCH:
 1/A-401
 4/A-401
 DS/A-601
 2/A-601

DOOR NUMBER
102
 ARCH:
 1/A-401
 4/A-401
 DS/A-601
 2/A-601

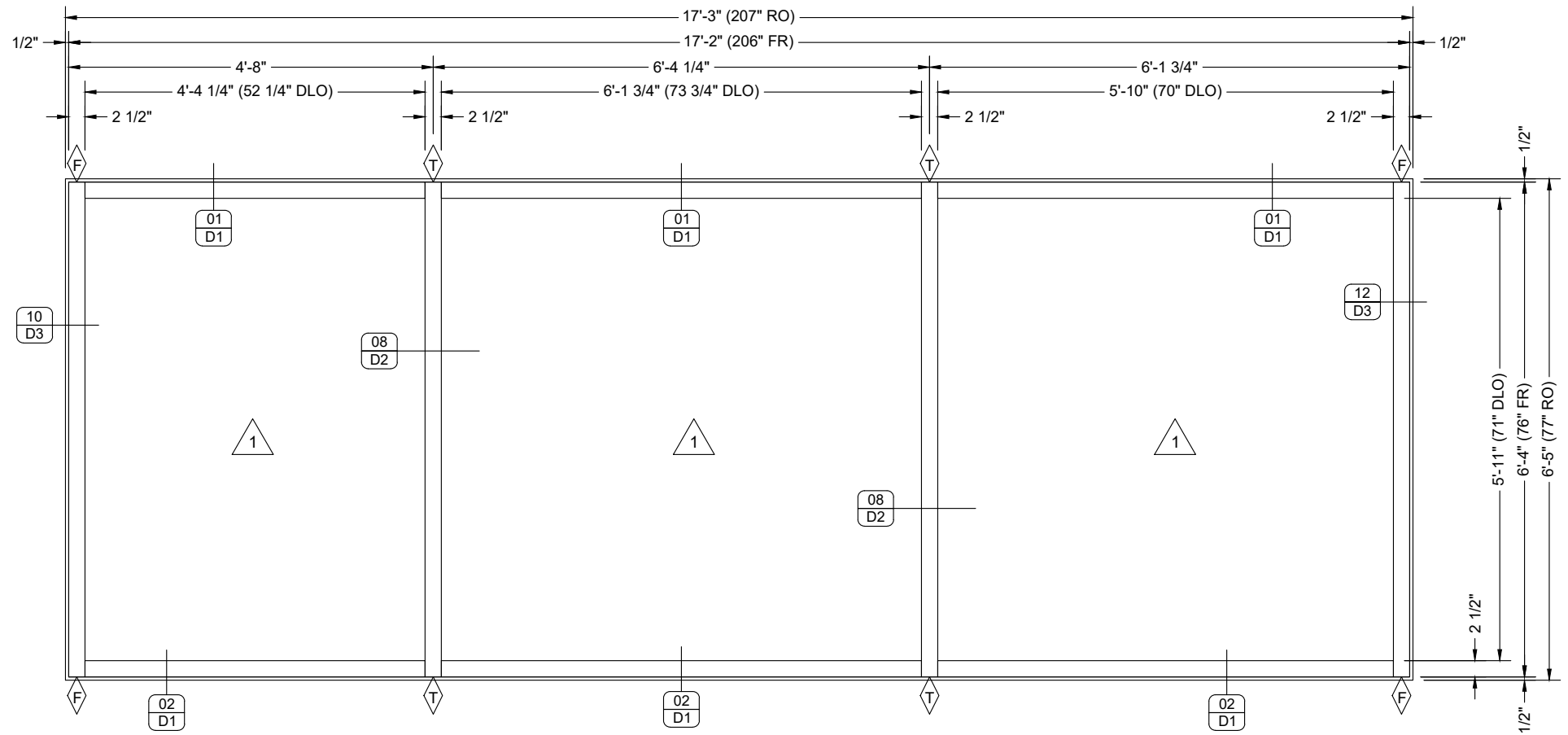
DOOR NUMBER
103
 ARCH:
 1/A-401
 4/A-401
 DS/A-601
 2/A-601

NO.	DATE	DESCRIPTION
1	02/19/22	First Submittal
fp		BY
1		SUB

CONTRACTOR'S GLASS PRODUCTS
 7701 WEBER RD, CORPUS CHRISTI, TX 78315
 WORK (361) 854-8188 FAX (361) 854-4412

REMODEL OF FOOD COURT ENTRANCE
 PROJECT: LA PALMERA MALL
 ARCHITECT: OMNIPLAN
 GENERAL CONTRACTOR: VCC-LLC

PROJECT NO.	CGP-2202-01
DRAWN BY	fp
DATE	02/19/22
SCALE	1/2" = 1'-0"
DRAWING	ELEVATIONS
SHEET	E1



ELEVATION

QUANTITY: 01
 SCALE: 1/2" = 1'-0"
 ARCH REF: 1/A-101 2/A-301 2/A-311 5/A-301 4/A-401

A2

CURTAIN WALL

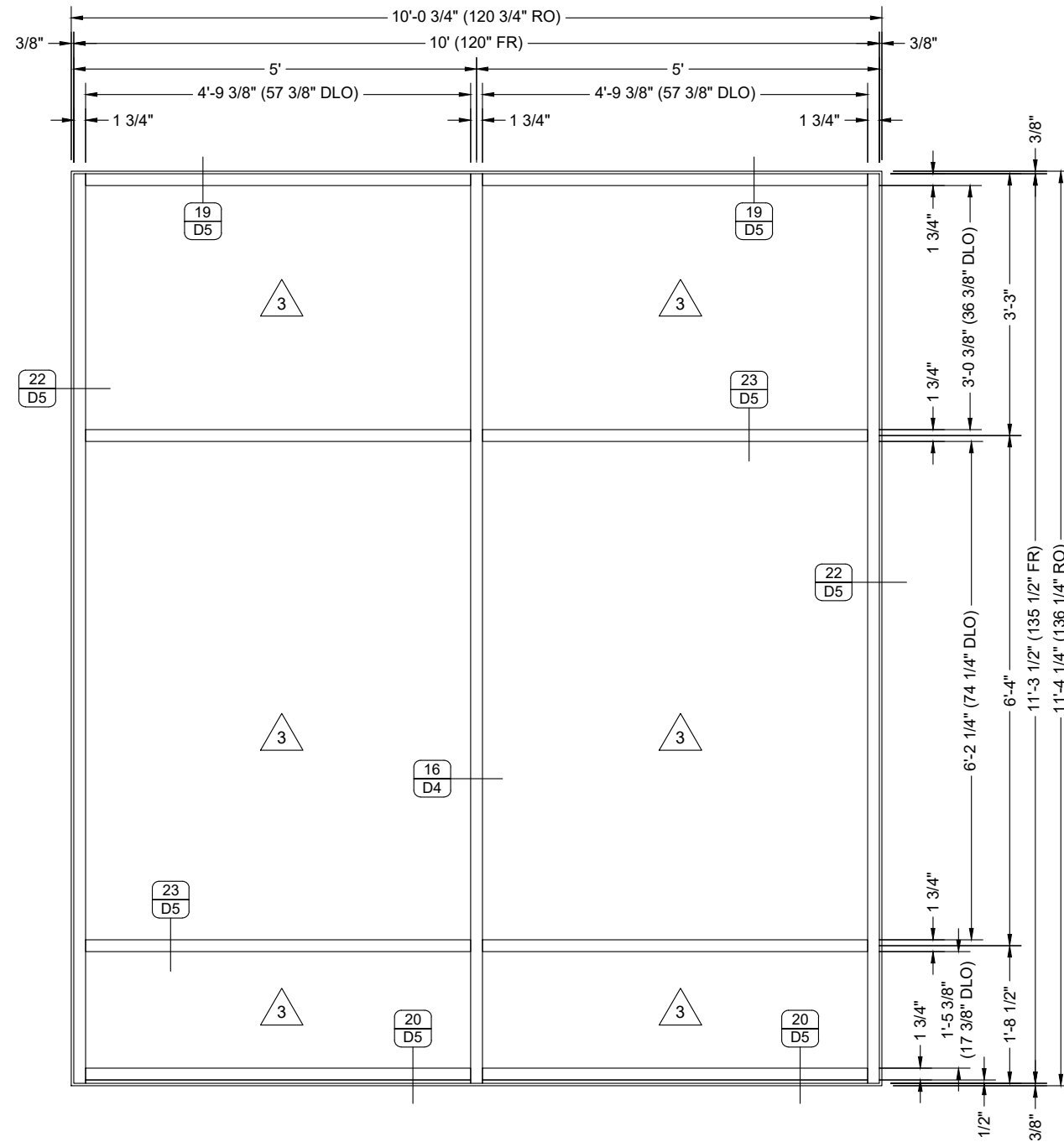
KAWNEER 1600, SYSTEM 1 IMPACT CURTAIN WALL

SUB		BY	DATE	DESCRIPTION
1	1	fp	02/19/22	First Submittal

CONTRACTOR'S GLASS PRODUCTS
 7701 WEBER RD, CORPUS CHRISTI, TX 78315
 WORK (361) 854-8188 FAX (361) 854-4412

PROJECT: LA PALMERA MALL
REMODEL OF FOOD COURT ENTRANCE
 ARCHITECT: OMNIPLAN
 214-326-1080
 GENERAL CONTRACTOR: VCC, LLC
 469-594-3110

PROJECT NO.		CGP-2202-01
DRAWN BY	DATE	
fp	02/19/22	
SCALE		1/2" = 1'-0"
DRAWING		ELEVATIONS
SHEET		E2



ELEVATION
 QUANTITY: 01
 SCALE: 1/2" = 1'-0"
 ARCH REF: 1/A-101 1/A-401 3/A-401 5/A-401

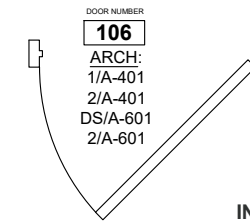
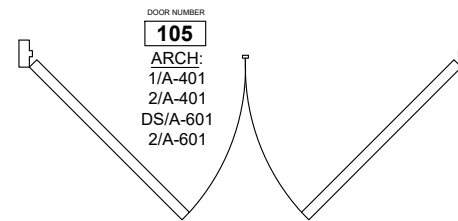
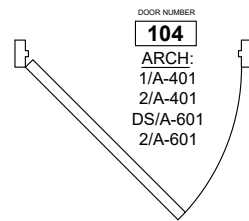
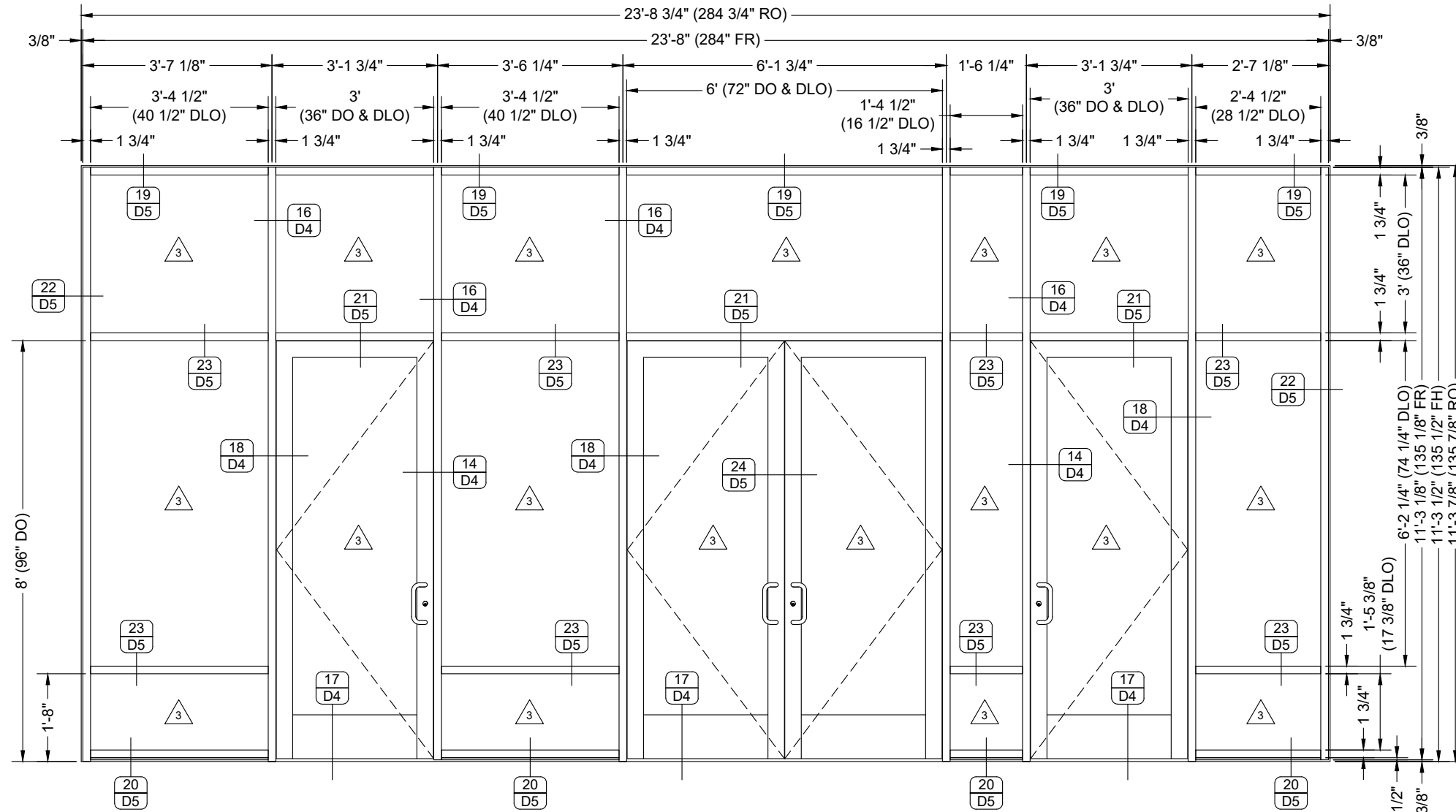
B INTERIOR STOREFRONT
 KAWNEER TRIFAB VG-450 ALUMINUM STOREFRONT

DATE	DESCRIPTION
02/19/22	First Submittal
fp	BY
1	SUB

CONTRACTOR'S GLASS PRODUCTS
 7701 WEBER RD, CORPUS CHRISTI, TX 78315
 WORK (361) 854-8188 FAX (361) 854-4412

REMODEL OF FOOD COURT ENTRANCE
 PROJECT: LA PALMERA MALL
 ARCHITECT: OMNIPLAN 214-326-1080
 GENERAL CONTRACTOR: VCC, LLC 469-504-3110

PROJECT NO.	CGP-2202-01
DRAWN BY	fp
DATE	02/19/22
SCALE	1/2" = 1'-0"
DRAWING	ELEVATIONS
SHEET	E3



INTERIOR DOOR HARDWARE
 CONTINUOUS GEARED HINGES
 NO LOCKS
 NO THRESHOLDS
 C-09PULLS/ CP-1/ PUSH BARS
 SEALS
 OVERHEAD SURFACE MOUNTED ADJUSTABLE CLOSERS
 STANLEY MAGIC FORCE AUTOMATIC DOOR OPERATOR DR.#706

ELEVATION

QUANTITY: 01
 SCALE: 3/8" = 1'-0"
 ARCH REF: 1/A-101
 1/A-401

C

INTERIOR ENTRANCE

KAWNEER TRIFAB VG-450 ALUMINUM STOREFRONT
 KAWNEER 350 STANDARD DOOR ON VG-450 FRAME

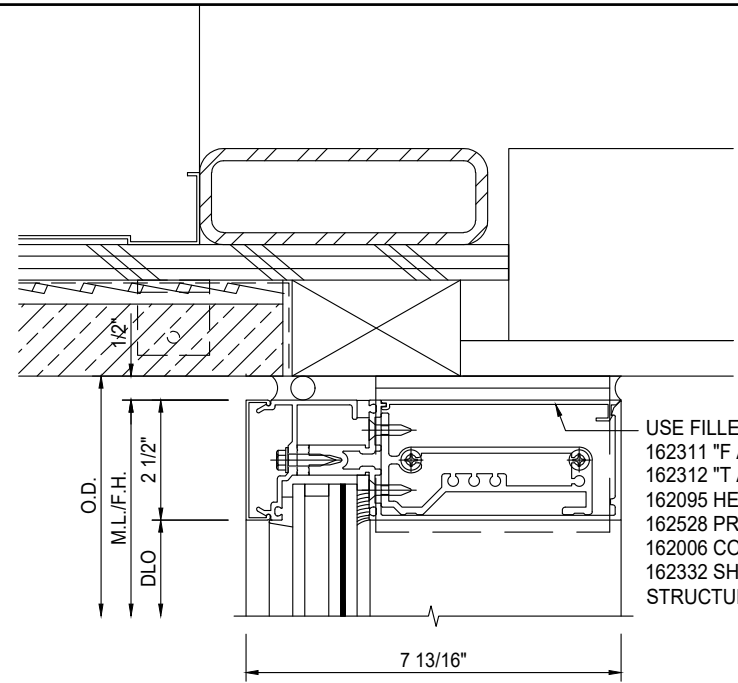
2/A-401 2/A-311 5/A-401 DS/A-601 2/A-601

NO.	DATE	BY	DESCRIPTION
1	02/19/22	fp	First Submittal

CONTRACTOR'S GLASS PRODUCTS
 7701 WEBER RD., CORPUS CHRISTI, TX 78315
 WORK (361) 854-8188 FAX (361) 854-4412

REMODEL OF FOOD COURT ENTRANCE
 PROJECT: LA PALMERA MALL
 ARCHITECT: OMNIPLAN
 GENERAL CONTRACTOR: VCC-LLC

PROJECT NO.	CGP-2202-01
DRAWN BY	fp
DATE	02/19/22
SCALE	1/2" = 1'-0"
DRAWING	ELEVATIONS
SHEET	E4



USE FILLER 162020 WHEN REQUIRED.
 162311 "F ANCHOR"
 162312 "T ANCHOR"
 162095 HEAD/SILL HORIZONTAL
 162528 PRESSURE PLATE
 162006 COVER
 162332 SHEAR BLOCK
 STRUCTURAL SILICONE SEALANT (BY OTHERS)*

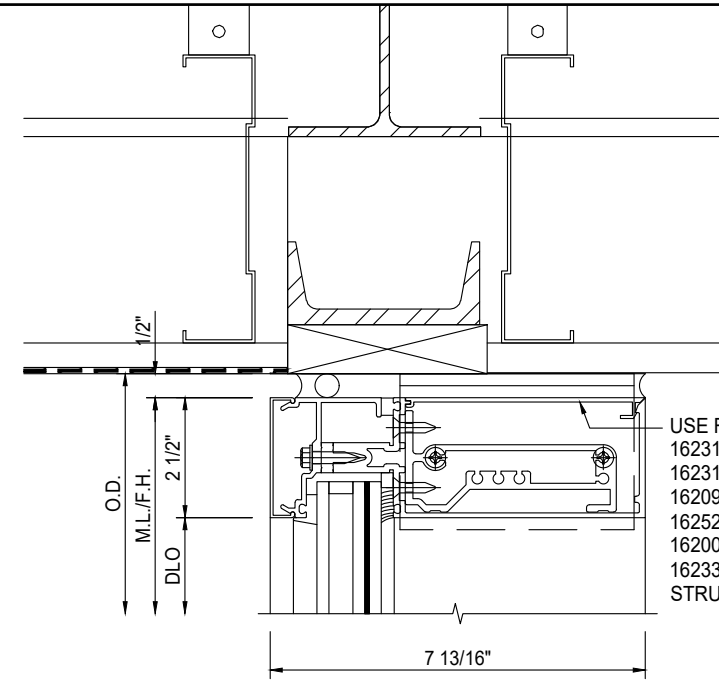
DETAIL

SCALE: 3" = 1'-0"
 ARCH REF: 16/A-521

01

EXTERIOR HEAD

KAWNEER 1600, SYSTEM 1 IMPACT CURTAIN WALL



USE FILLER 162020 WHEN REQUIRED.
 162311 "F ANCHOR"
 162312 "T ANCHOR"
 162095 HEAD/SILL HORIZONTAL
 162528 PRESSURE PLATE
 162006 COVER
 162332 SHEAR BLOCK
 STRUCTURAL SILICONE SEALANT (BY OTHERS)*

DETAIL

SCALE: 3" = 1'-0"
 ARCH REF: 12/A-521

03

EXTERIOR HEAD

KAWNEER 1600, SYSTEM 1 IMPACT CURTAIN WALL

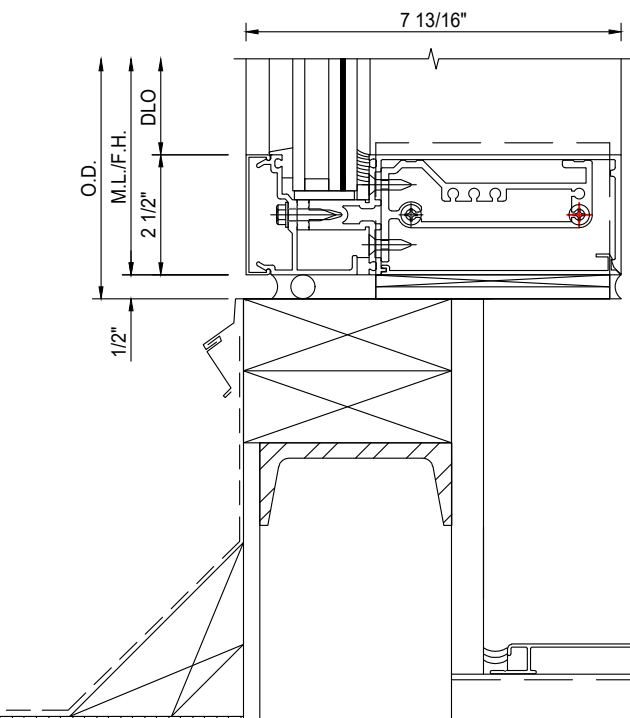
DETAIL

SCALE: 3" = 1'-0"
 ARCH REF: 12/A-521

02

EXTERIOR SILL

KAWNEER 1600, SYSTEM 1 IMPACT CURTAIN WALL



162311 "F ANCHOR"
 162312 "T ANCHOR"
 162095 HEAD/SILL HORIZONTAL
 162528 PRESSURE PLATE
 162006 COVER
 162332 SHEAR BLOCK
 162317 SHIM FILLER
 STRUCTURAL SILICONE SEALANT

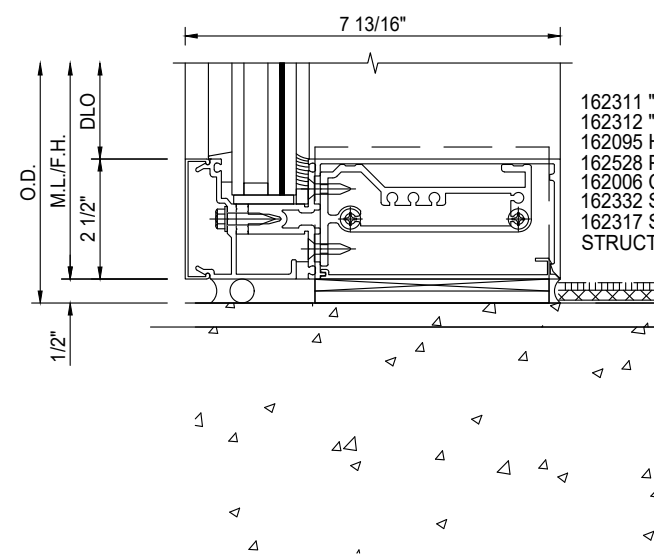
DETAIL

SCALE: 3" = 1'-0"
 ARCH REF: 04/A-521

04

EXTERIOR SILL

KAWNEER 1600, SYSTEM 1 IMPACT CURTAIN WALL



162311 "F ANCHOR"
 162312 "T ANCHOR"
 162095 HEAD/SILL HORIZONTAL
 162528 PRESSURE PLATE
 162006 COVER
 162332 SHEAR BLOCK
 162317 SHIM FILLER
 STRUCTURAL SILICONE SEALANT

NO.	DATE	BY	DESCRIPTION
1	02/19/22	fp	First Submittal

CONTRACTOR'S GLASS PRODUCTS
 7701 WEBER RD, CORPUS CHRISTI, TX 78315
 WORK (361) 854-8188 FAX (361) 854-4412

PROJECT
 LA PALMERA MALL
REMODEL OF FOOD COURT ENTRANCE
ARCHITECT
 OMNIPLAN
 214-326-1080
GENERAL CONTRACTOR
 VCC-LLC
 469-504-3110

PROJECT NO.	CGP-2202-01
DRAWN BY	fp
DATE	02/19/22
SCALE	3" = 1'-0"
DRAWING	DETAILS
SHEET	D1